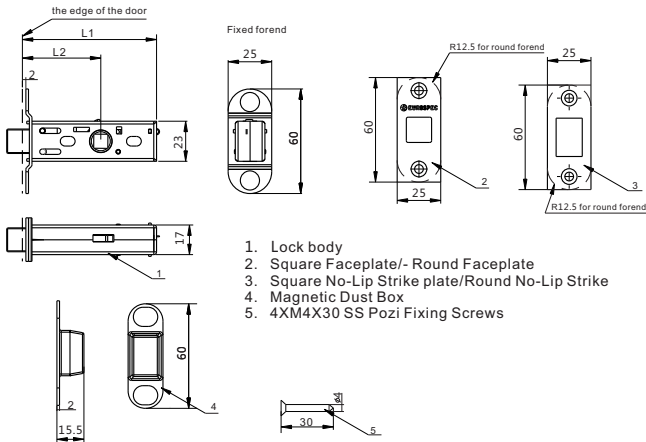


Installation and Operating Instructions
TLM Magnetic Tubular Latch



	L1	L2
TLM5025	77	45
TLM5030	77	57

IMPORTANT INFORMATION

PLEASE READ THESE INSTRUCTIONS CAREFULLY

This product is designed to work with Spring assisted lever Furniture with Bolt through Fixings And Light Tubular Hollow Lever Furniture unsprung

This product is non handed and can be fitted on both left and right handed doors



Product Preparation

Hand Fitting-Square Plates

Tools required:

- Drill & 25.4mm (1") drill bit
- Mallet
- Chisel
- Posidrive Screwdriver
- Pencil
- Masking tape
- Set square

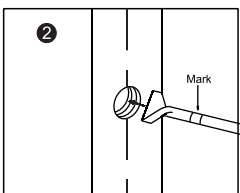
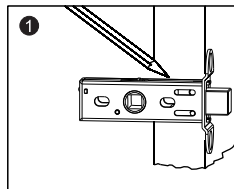
Prior to fitting ensure you identify the correct position for the TLM Latch prior to installation. Refer to the Triangle marking on the body of the latch.



Installation

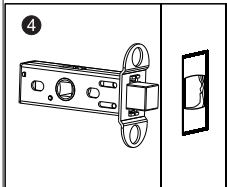
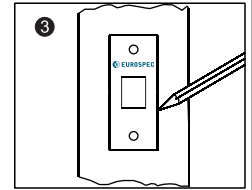
Step 1. PREPARATION OF LATCH BODY

Position the body of the latch across the edge of the door at the height chosen for fitting. Best practise height for fitting is between 800mm-1060mm from FFL (Finished Floor Level) (fig1)



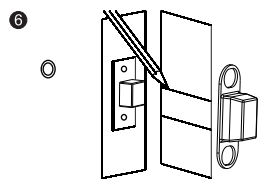
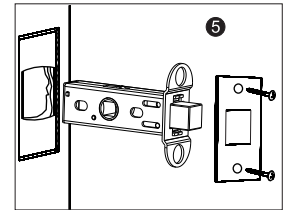
Along the Door Edge Mark a vertical centre point for your 1" Augur Bit. Drill to the Required depth of the Latch Body + required faceplate (78mm) - Using Masking tape mark the depth on the Bit to ensure correct depth is achieved. (fig 2)

Square off the Hole with a sharp Chisel then insert the latch into the prepared mortice. Place the faceplate over the latch and carefully mark around the faceplate. Remove the latch and chisel out to the required depth to accept both the latch & faceplate. Check the latch will be flush when finally fitted (Fig3)



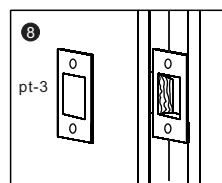
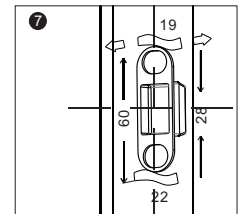
Place the latch against the door Face in line with your mortice, and allowing for faceplate depth mark the position of the follower (45/57mm) drill a hole sufficient for follow to Handle spindle to fit (Fig 4) (Refer the Handle Fitting Instructions and fit the handle set)

Install Latch & required Faceplate making sure latch body is the correct way up (Fig 5)



Using the Magnetic dust Box (pt-4) hold adjacent to the fitted latch and draw out the magnetic bolt. Mark the bottom & top of the bolt on the door frame (fig6) Transfer these marks across the inside face of the door frame marking s centre line in the inside frame opposite the magnetic bolt (Fig 6)

Selecting the Magnetic Dustbox (pt-4) prepare a recess in the frame to accept dust box 19mm depth, 22mm wide, 28mm high (Fig7). Temporarily install the dustbox and hold using masking tape. Close the door with handle set fitted and determine the correct position of the magnetic dustbox allowing for free movement of the magnetic bolt.



With the final dust box position established use the strike plate (pt-3) mark around the plate and prepare a recess to the required depth (Fig8). Fix with remaining screws. Ensure when fitted the plate is flush with the frame. Re-check operation of bolt and adjust as necessary.



+44 1228 511030

+44 1228 511885

Carlisle Brass Ltd, Parkhouse Road, Carlisle, CA3 0JU

enquiries@carlislebrass.com

www.carlislebrass.com

