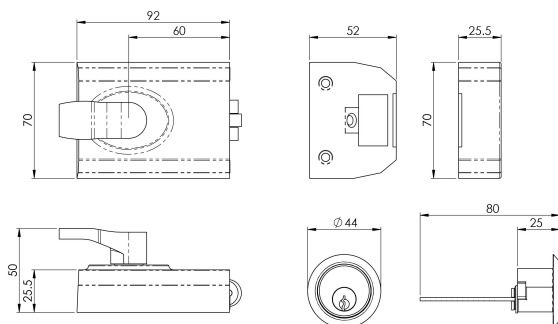


Contract Rim Cylinder Rollerbolt

RCB8260



Contract Rim Cylinder Rollerbolt and Lockcase only The standard latch has been replaced by a roller bolt which is sprung to allow the door to open and close on a simple pull or push and does not require the key or handle to operate in this position. Ideal for an external door application that has a pull handle only. Comes with a 5 year guarantee.

