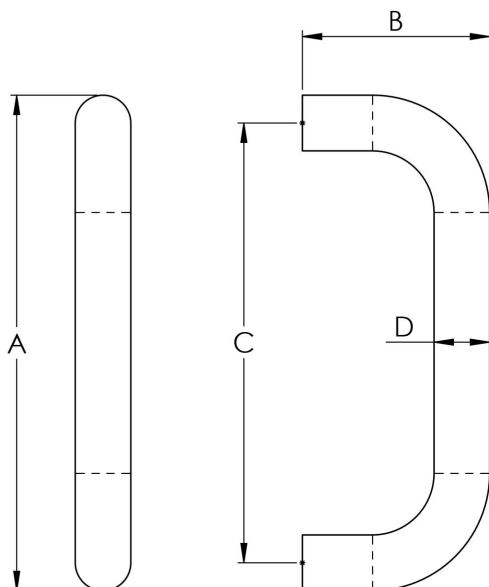


## 19mm D Pull Handle

### CSD1225 Range



A robust and functional 19mm Dia. round bar D type pull handle, part of the Steelworx range in grade 304 Stainless Steel, so ideal for internal and external homes and offices. Available in different sizes. These pull handles are fixed with 2 no M8 threaded bolts through the door giving the strongest fixing possible.

