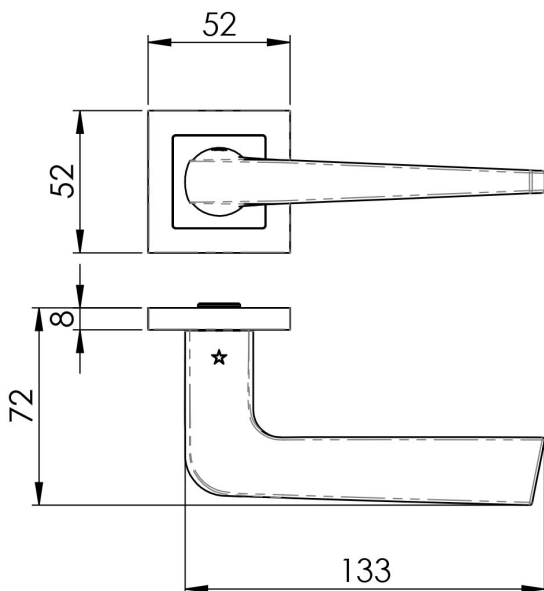


Plaza Designer Lever on Sprung Square Rose

SSL1404SSS



A square cut straight tapering lever on a concealed fix square press on rose. An unfussy design which will blend well in a variety of applications. Part of a square themed designer lever collection in the Steelworx range in grade 304 Stainless Steel. Certified to BS EN 1906 standard and is fire door rated.

