

Hand Forged Beeswax Shepherds Crook Casement Window Stay

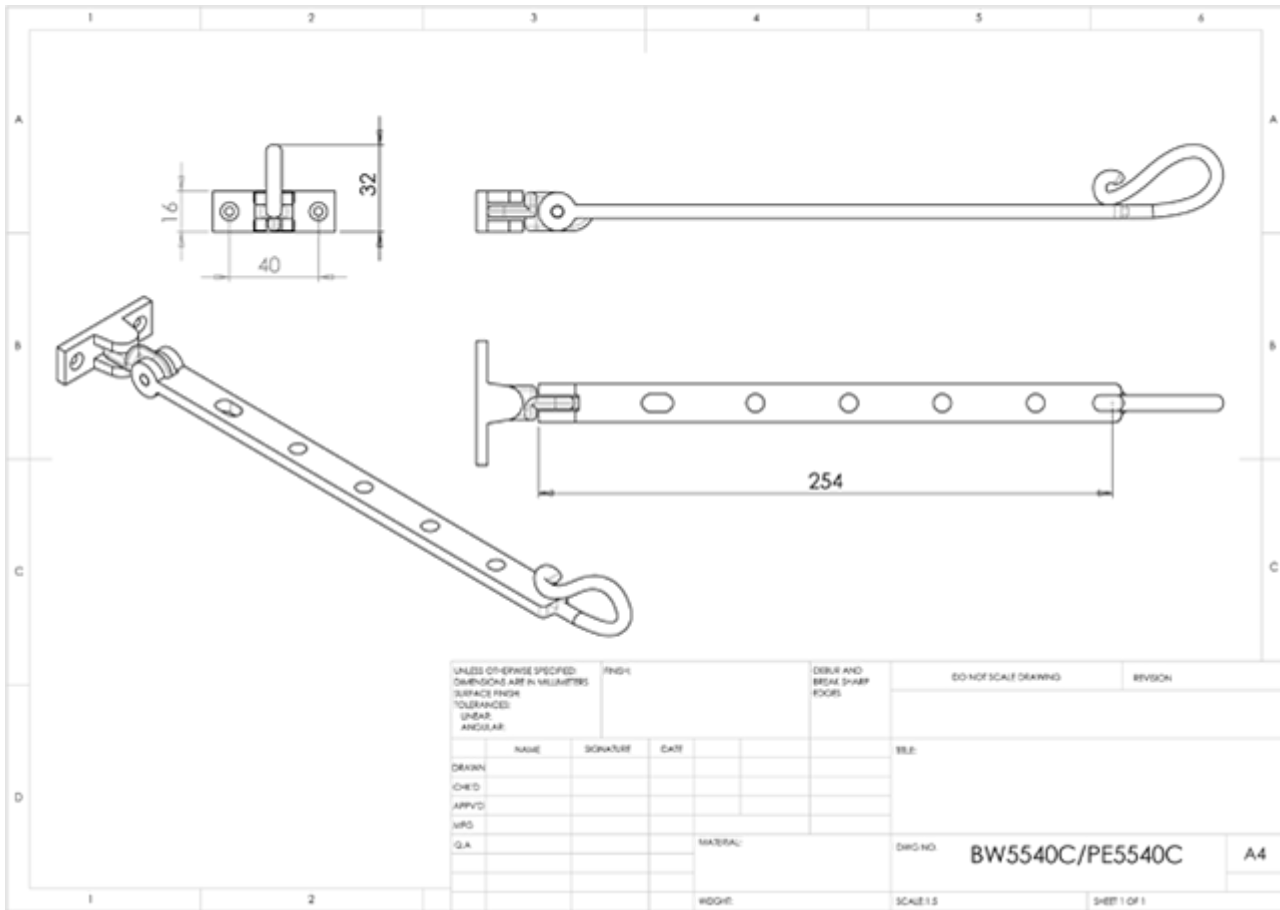
Product Images



Description

An individually hand forged, casement window stay using traditional blacksmith methods. The stay is so called because of the elegant shepherds crook swirl at the end of the stay. Can be used in conjunction with the shepherds crook casement fastener to achieve a consistent appearance. The rustic old fashioned styling is more suitable for period properties. The Beeswax finish is the simple, age-old combination of hand forged fired metal finished with wax. The product will acquire its own unique patina over years of use. Comes with a 10 year mechanical guarantee. Not suitable for external use.

Technical Details



Specification



Additional Information

SKU	BW5540C
Brands	Ludlow Foundries
Finishes	Beeswax
Sizes	302.5mm
Technical	4
Line Drawings	BW5540C.PDF