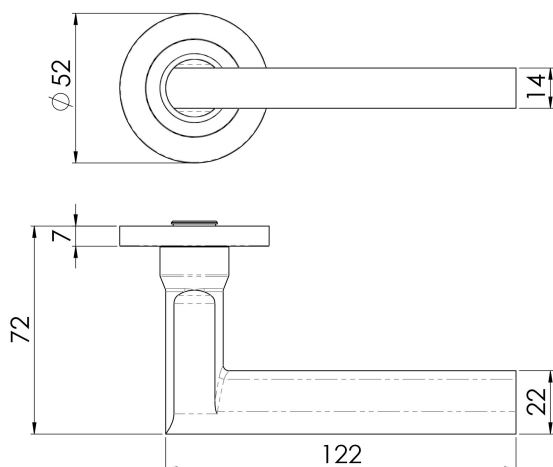


Soho Designer Lever on Threaded Rose

SWL1120SSS



Soho Lever on a concealed fix threaded slim rose. A slender straight lever with an elliptical shape. The neck stems from the rose in a rounded square section through a continuous right angle blending into the tapering elliptical profile of the lever. The SWL lever collection on a slim 7mm rose reflects the latest trends for subtle discreet fittings with ultra-modern styling and quality engineering.

